



1-888-872-1213

Walk-in
Bath Tub
Comparison
Points

Compare the features of the best built walk-in bathtubs vs 'lower priced' models before you spend too much for less quality

Metal Framework:

¾ inch or 1&1/2 inch members
Aluminum stock or Stainless steel
Wooden or steel platforms

Legs on Frame:

Four or Six adjustable feet
3/8 inch or ¾ inch
Plastic or metal feet
Padded feet or not

Hydrotherapy:

Air jets vs. water jets vs. both
Inline heater or not
Custom positioned for needs

Air Jets:

Placement on seat base
vs. hip directional
Total number of jets and
distribution

Controls:

Pneumatic buttons vs.
electronic touch pad
Variable speed or single speed
Self purging timed delay or not

Blower motor(s):

Power and warrantee
Padded mounting blocks
Bolted to frame vs.
just sitting on floor
Mufflers or not = quiet or loud

Hydrotherapy hoses:

Balanced distribution system
vs. pigtail rigging
Stainless steel clamps vs. glue
Individual hoses vs. strip pressure

Tub construction:

Fiberglass vs. acrylic

Door hinges:

Stainless steel piano hinge vs.
Plated drop pins

Door handles:

Striker plate to avoid chafing or not
Single or double locking handle
Heavy duty easy grip or not

Door seal:

Lifetime or limited warrantee

Faucets:

One piece vs. four piece
Easy turn paddle shape or crosshairs

Grab bars:

Built in or optional

State Approval:

Without this you void your permits
and house insurance

Shower head:

Wall or deck mounted

Drain:

Power drain for fast draining
Snorkel vent for gravity drain

Installation:

Experienced crew of licensed
carpenters, electricians and
plumbers with Guaranteed
satisfaction vs. DIY

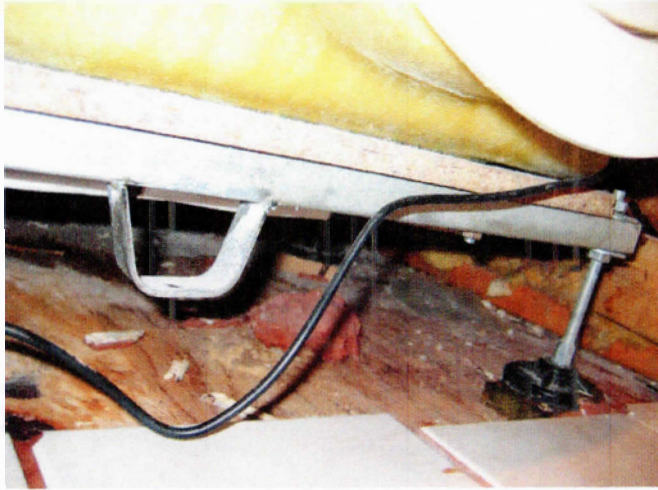
Warrantee support:

Ship it back vs. on-site service

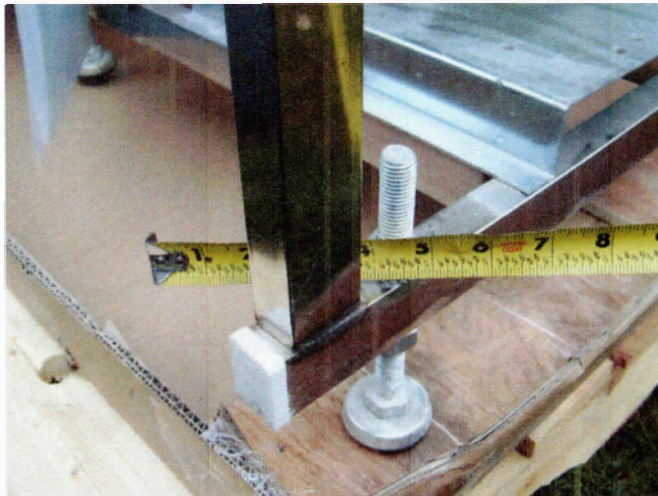
The following pages display pictures and descriptions of these critical components. If you don't understand the difference in these components please call or email us for a more detailed description of the consequences of each issue.

Ultra Tubs – 781.438.2206

Frame / Platform / Legs



Some Companies provide:
Frame = aluminum
Platform = particleboard
Legs = four (4) at 3/8inch
With plastic feet

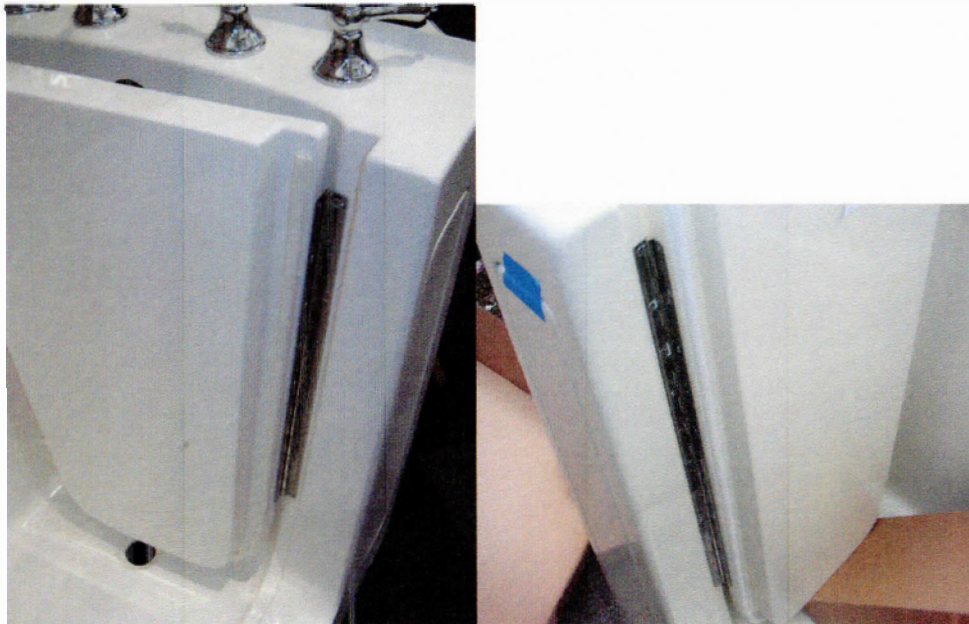
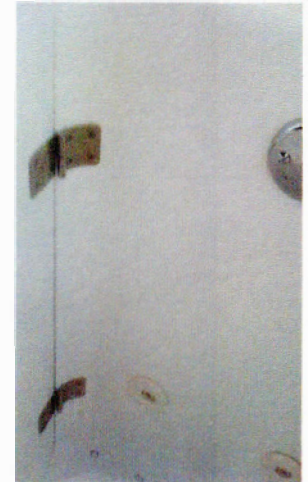


Ultra Tubs provides:
Frame = all stainless steel
Platform = all stainless steel
Legs = six (6) at 3/4 inch
with steel feet with cushions

Door Hinge

Some Companies provide:
Two plated drop pin hinges

Simply leaning on the top of
the door puts too much torque
on top hinge.



Ultra Tubs prefers: Full
length stainless steel
Piano hinge which
Distributes weight better



Door Handle

Some companies provide:

Thin

Double relay

Chafes on the fiberglass



Ultra Tubs provides: Very heavy duty with easy grip head

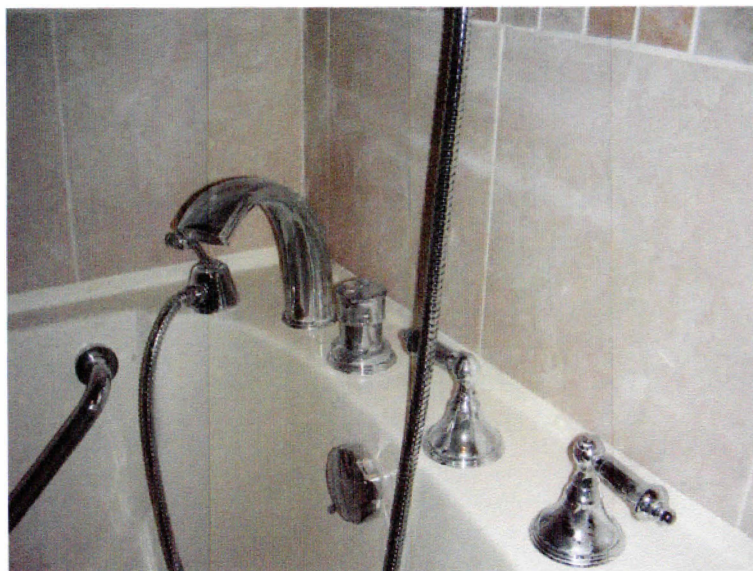
Single pivot

Striker plate to protect door



Faucets

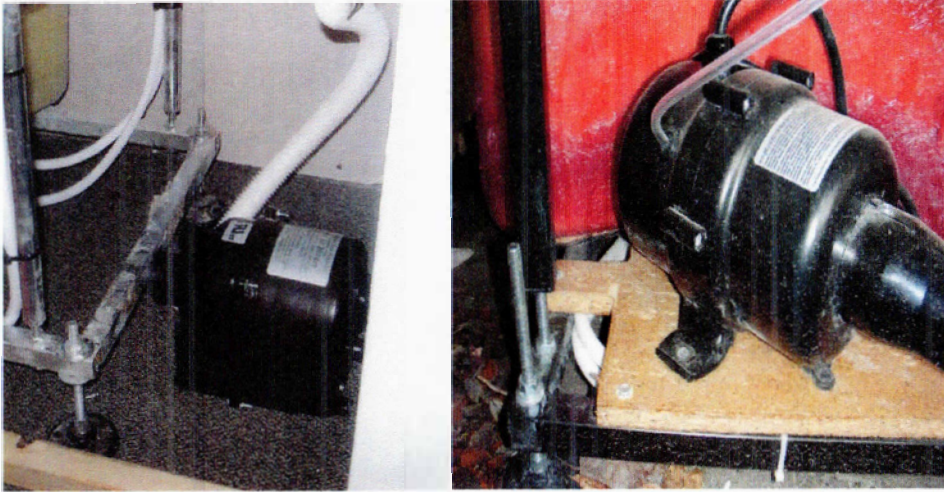
Some Companies provide:
Clumsy, Small handles
(difficult to turn with arthritis)
Single unit complications



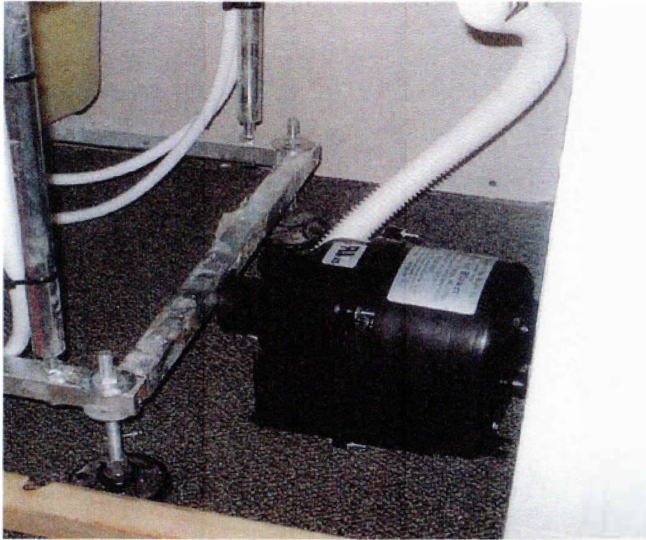
Ultra Tubs prefers:
Four separate heavy duty units
With separate shower options
Large easy turn handles with $\frac{1}{4}$ turns

Motor (s)

Some Companies provide:
One air motor
Sits on floor or wood
Loud & loose

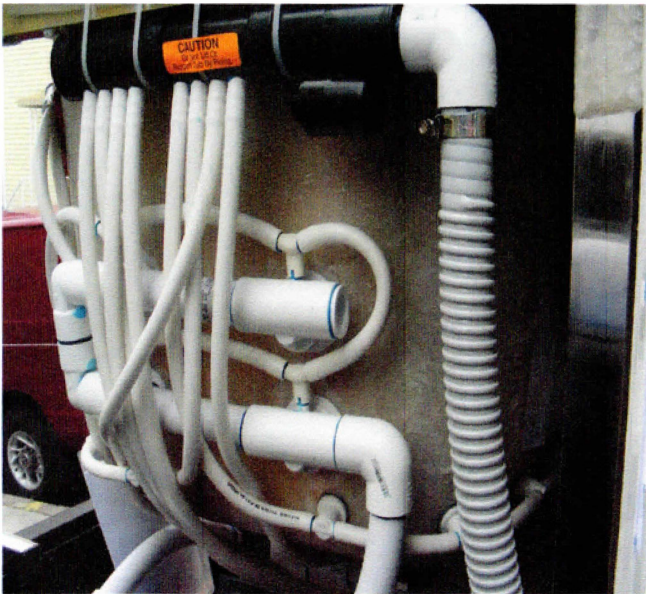


Ultra Tubs provides:
One or Two motors ~
with variable speeds,
Bolted to steel platform,
with cushioned feet and
mufflers for silent operation



Air Hose System

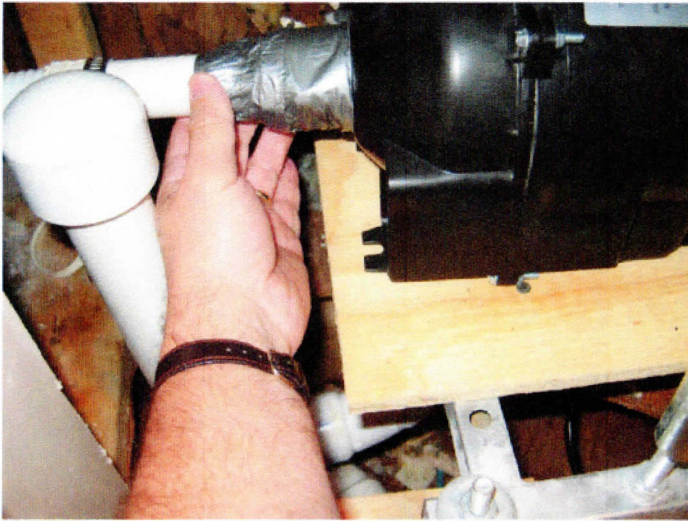
Some Companies provide:
Flimsy pigtailed cluster of
air lines



Ultra Tubs provides: Balanced
individual feed lines run through
Pressure Distribution system

Hoses Clamps

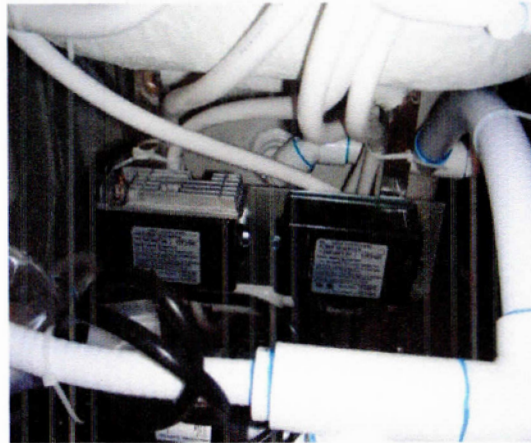
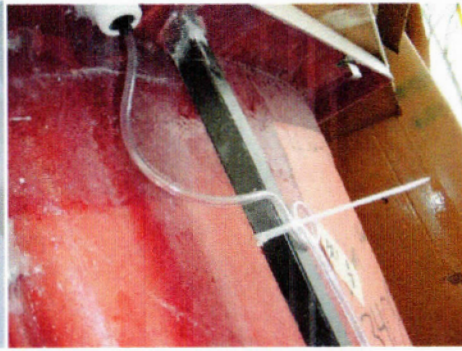
Some Companies provide:
Duct tape connections



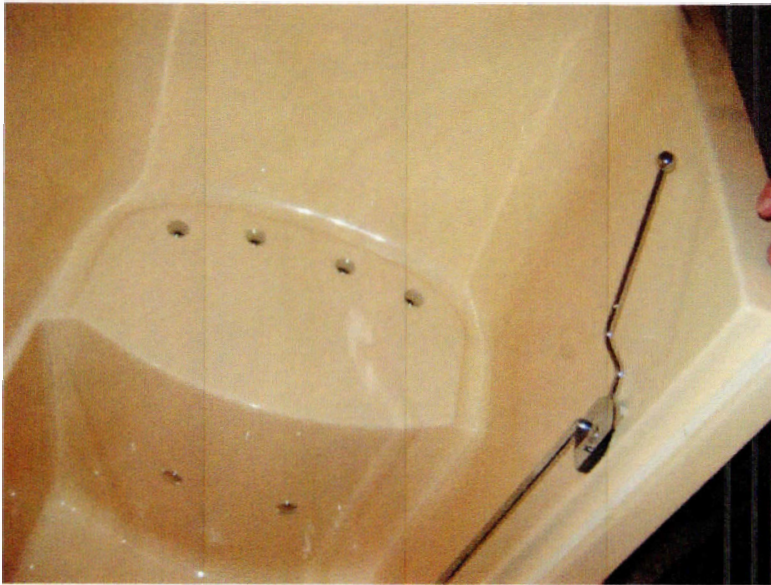
Ultra Tubs provides:
Stainless steel strap clamps
Over glue and threading

Pump Controls

Some companies provide:
Simple pneumatic 'column of air'
button that trips a motor switch.
Concern is water getting into that
air tube causing problems

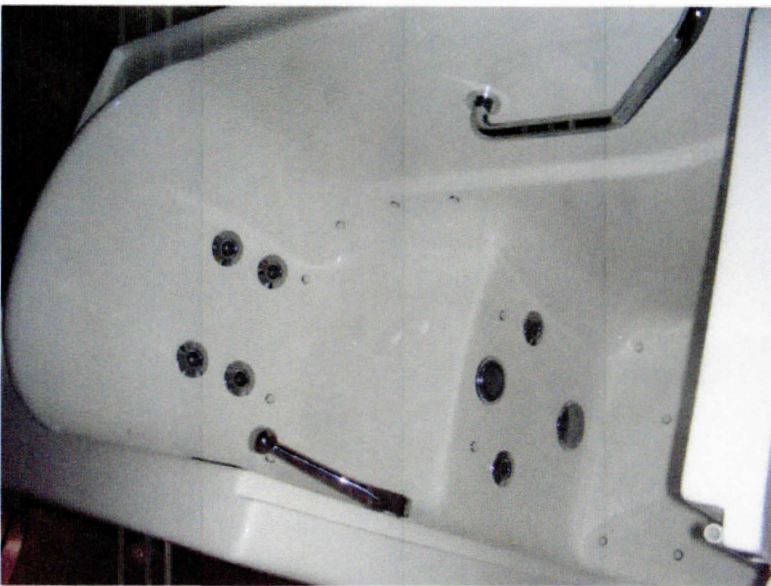


Ultra Tubs provides:
Electronic Touch pad controls
which include variable speeds
and in-line heaters.



Hydrotherapy

Some Companies provide:
10 port airjet system as
only option
Jets on seat bottom
~ blocked when you sit on them!

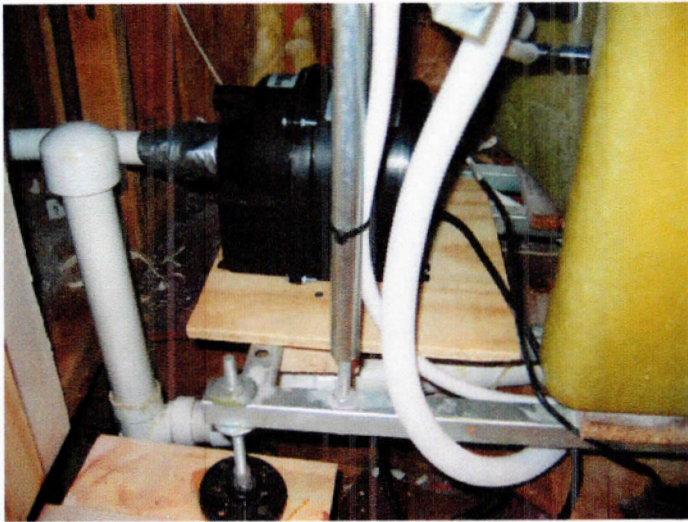


Ultrva: Tubs prefers:
Up to 24 port airjet system,
Positioned above seat curve,
With in-line heater....
Or....
5 to 12 nozzle water jet system
~ Custom positioned, with heater...
Or....
Combination Dual system

Tub Depth

If you put two tubs beside each other in a room and tried them out for size.....Would you rather the water only come up to your waist...? or up to your chest..?...or up to your neck..? Ultra Tubs sizes the tub to your desires





Installation

Some Companies provide:
Anything will do attitude
No floor supports –
“Out of sight” mentality
Or pick it up and Do It Yourself



Ultra Tubs provides:
All permits pulled and work
done by licensed plumbers,
electricians and carpenters
with all work approved by
customer and guaranteed

Guarantee

Many companies give one year or less guarantee and can tell you to 'return the tub' if you have an issue!

Ultra Tubs provides tubs with Lifetime guarantee on the tub, door, frame and all seals and a minimum of Ten Years guarantee on the moving parts (pumps). We address any issue in your home.

State Approval

Some companies are unaware of State requirements and you can end up with a tub that can not be legally installed.

Ultra Tubs provides tubs that are fully approved and will not void your house insurance and we pull permits for all installations.

Price

Some companies have huge overhead for tv commercials, spokespeople, warehousing, nationwide presence, call centers and huge management which adds enormous costs to the price of even a cheaper built tub!

Ultra Tubs ships direct to you right from the factory, has minimal overhead, advertises mostly by 'word of mouth' by happy clients and can provide the best quality tubs for the biggest savings to you.

Other benefits available from UltraTubs.....

- Many sizes for personalized fit, including highest wall height in industry
- Great alternatives to walk-in tubs as appropriate
- Assistance with financing
- Wide selection of Handicapped tubs and showers
- Free individual consultations for best results in getting the perfect tub with customized features for your comfort and security.